

M-AUDIO

Fast Track Ultra



English

Quick Start Guide

Introduction

Thanks for choosing M-Audio Fast Track Ultra, the professional, portable audio and MIDI interface for your Windows or Macintosh computer. Using the convenience and dependability of the industry-standard USB 2.0 bus, Fast Track Ultra offers unequalled routing power and versatility, high-resolution, 24-bit audio at sampling rates up to 96 kHz, sixteen channels of MIDI in and out and on-board DSP for flexible routing/mixing and a useful selection of reverb and delay effects.

This Quick Start Guide is designed to give you a basic overview of Fast Track Ultra, to get you up and running quickly. Even if you are an experienced computer user and digital recording enthusiast, we suggest you take the time to read the accompanying User Guide, included on the Fast Track Ultra CD. It will help you get the most out of your Fast Track Ultra.

What's in the Box

Your Fast Track Ultra package contains the following:

- ▶ Fast Track Ultra
- ▶ Printed Quick Start Guide
- ▶ Fast Track Ultra CD, including drivers and the User Guide
- ▶ Ableton Live Lite CD
- ▶ USB Cable
- ▶ 5VDC 2000mA power supply

Compatibility

Windows

Fast Track Ultra is supported under Windows XP with Service Pack 2 or later, or Windows Vista (32-Bit editions). It is not supported under Windows Media Center Edition, Windows 2000, Windows 98, 98SE or Windows ME.

Mac

Fast Track Ultra is supported by PowerPC-based Macs running Mac OS X 10.3.9 / 10.4.10 or later, as well as Intel-based Macs running Mac OS X 10.4.10 or later.

Please see the User Guide for specific Minimum System Requirements.

Important Note about Bus Power: *Fast Track Ultra can be powered via the included AC power supply or via bus power from the host computer. However, when running on bus power, Fast Track Ultra will be limited to four inputs and four outputs. These are mapped to inputs 1 and 2, outputs 1 and 2, and the S/PDIF I/O.*

Important Note about USB 1.1 Ports: *Fast Track Ultra has been designed as a USB 2.0 device. It may be used with a USB 1.1 port, but will only function as a 2-in/2-out device with sample rates limited to 44.1 and 48kHz. This is due to the limitations of the USB 1.1 bus bandwidth.*

If your computer does not have a native USB 2.0 port, you will see the following alert during the installation process:

*“Because this computer has no USB 2.0 ports,
Fast Track Ultra functionality will be limited.”*

Important Note about System Upgrades: *Please check the M-Audio driver download page at <http://www.m-audio.com/drivers> for the availability of an updated driver before you decide to install operating system updates.*

Before new M-Audio device drivers are released, they are tested for use with the operating system versions that are available at that time. When updates for an operating system are released by Microsoft or Apple, all M-Audio device drivers have to be re-tested and possibly updated to ensure proper operation.

M-Audio recommends refraining from installing operating system updates until a driver has been posted to the M-Audio website for that specific operating system.

Installing Fast Track Ultra

Installation Instructions For Windows XP and Vista

PLEASE NOTE: Make sure Fast Track Ultra is detached from your computer when beginning the installation. The following instructions will indicate when you should connect the interface to your computer.

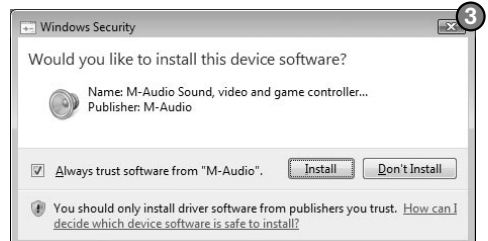
1. We recommend that you download the most recent Fast Track Ultra drivers by going to the Support > Drivers page at www.m-audio.com. This ensures that you have the newest drivers available. If you do not have Internet access, insert the Fast Track Ultra CD-ROM into your computer to install the drivers that came with the interface.

- a. If you are installing drivers from the Fast Track Ultra CD-ROM, the computer will automatically display the interactive install screen ¹ when the CD-ROM is inserted. If your computer fails to launch this application, you can manually start it by clicking on Start > My Computer* > Fast Track Ultra. Next, select Fast Track Ultra from the menu and click "Install."

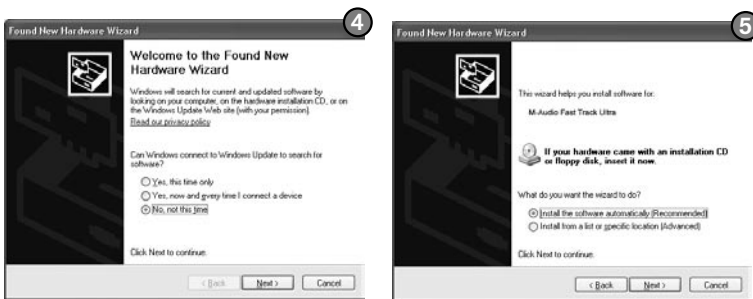


*My Computer" is named "Computer" in Windows Vista.

- b. If you are installing drivers from www.m-audio.com, simply double-click the file once it has finished downloading.
2. Follow the driver installer's on-screen instructions.
 3. At various points in this installation process, you may be notified that the driver being installed has not passed Windows Logo Testing (Windows XP), or asked whether the program you wish to run is a trusted application (Windows Vista). Click Continue Anyway ² or Install ³ to proceed with installation.



4. Once the installer has completed, click “Finish.”
5. Connect Fast Track Ultra to a power outlet and to an available USB 2.0 port on your computer.
6. Turn on Fast Track Ultra. If you are using Windows Vista, your Fast Track Ultra installation is now complete. If you are using Windows XP, proceed to steps 7-10.
7. Windows XP will identify the interface and will ask if you want to search the Internet for a driver. Select “No, not this time” and press “Next.” ④
8. Windows XP will display a Found New Hardware Wizard. Choose “Install the software automatically” and click “Next.” ⑤
9. Once the Wizard has completed, click “Finish.” You may be presented with a second Found New Hardware Wizard. If so, then repeat steps 7-10.
10. When the installation is complete, you will see a message stating “Your new hardware is installed and ready to use.”



Installation Instructions For Mac OS X

1. We recommend that you download the most recent Fast Track Ultra drivers by going to the Support > Drivers page at www.m-audio.com. This ensures that you have the newest drivers available. If you do not have Internet access, insert the Fast Track Ultra CD-ROM into your computer to install the drivers that came with the interface.
 - a. If you are installing drivers from the Fast Track Ultra CD-ROM, a CD-ROM icon will appear on your desktop once the disc is inserted into your computer. Double-click this icon to view the contents of the disc. Next, double-click “Open Me.” Finally, select your product from the drop-down menu on the welcome screen ① and click “Install.”
 - b. If you are installing drivers from www.m-audio.com, the downloaded file should automatically mount and display its contents on the desktop. If this file does not mount automatically, simply double-click the file once it has finished downloading to view its contents. Next, double-click the installer application.

2. Follow the driver installer's on-screen instructions. During installation, Mac OS X will ask you to enter your user name and password. Enter this information and click OK to confirm. If you have not configured a password for your computer, leave the password field blank and click OK. If you are not the computer's owner, ask the owner or your Administrator for the missing information.



3. When the installer has completed, click "Close."
4. Connect Fast Track Ultra to a power outlet and to an available USB port on your computer.
5. Turn on Fast Track Ultra.

Using Fast Track Ultra

Recording Analog Inputs

Connect microphones or electric instruments via the front-panel inputs, or line level sources via the rear-panel line inputs, making sure the front/rear selector switches are set to the correct input type. Use the gain pots to set the recording levels, making sure that the LED level meters are never lit red. Engage phantom power via the rear panel slider if using condenser microphones. If using the line inputs, the gain pots for the associated mic inputs should be turned down to avoid unwanted noise. See the User Guide for more information on recording input sources.

Recording Digital Inputs

Connect a digital S/PDIF source to the rear-panel S/PDIF input. Go to the Settings tab in the Fast Track Ultra Control Panel and select S/PDIF as the clock source to ensure proper digital clocking. See the User Guide for more information on digital synchronization.

Adjusting the Output Level

Connect the Fast Track Ultra rear panel line outputs to a mixing console, amplifier or powered monitors. Outputs 1 and 2 can be directly controlled by the front-panel main output level knob. Other outputs are controlled via your DAW application or the Fast Track Ultra Control Panel.

Headphone Monitoring

The two front-panel headphone outputs are assigned to line outputs 1/2 and 3/4, respectively. Select the Monitor 1/2 or Monitor 3/4 tab from the Fast Track Ultra Control Panel and adjust the monitoring levels for the desired hardware input channels and for signals returning from your recording software (software returns). Adjustments made here will only affect monitoring (listening) levels. Recordings are not affected by level settings made in the Fast Track Ultra Control Panel.

Warranty

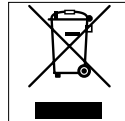
Warranty Terms

M-Audio warrants products to be free from defects in materials and workmanship, under normal use and provided that the product is owned by the original, registered user. Visit www.m-audio.com/warranty for terms and limitations applying to your specific product.

Warranty Registration

Immediately registering your new M-Audio product entitles you to full warranty coverage and helps M-Audio develop and manufacture the finest quality products available. Register online at www.m-audio.com/register to receive FREE product updates and for the chance to win M-Audio giveaways.

WARNING: This product contains chemicals, including lead, known to the State of California to cause cancer, and birth defects or other reproductive harm. **Wash hands after handling.**



© 2007 Avid Technology, Inc. All rights reserved. Product features, specifications, system requirements and availability are subject to change without notice. Avid, M-Audio and Fast Track Ultra are either trademarks or registered trademarks of Avid Technology, Inc. All other trademarks contained herein are the property of their respective owners.

M-Audio USA 5795 Martin Rd., Irwindale, CA 91706	
Technical Support	
web:	www.m-audio.com/tech
tel (pro products):	(626) 633-9055
tel (consumer products):	(626) 633-9066
fax (shipping):	(626) 633-9032
Sales	
e-mail:	sales@m-audio.com
tel:	1-866-657-6434
fax:	(626) 633-9070
Web	www.m-audio.com

M-Audio U.K. Floor 6, Gresham House, 53 Clarendon Road, Watford WD17 1LA, United Kingdom	
Technical Support	
e-mail:	support@maudio.co.uk
tel:(Mac support):	+44 (0)1765 650072
tel: (PC support):	+44 (0)1309 671301
Sales	
tel:	+44 (0)1923 204010
fax:	+44 (0)1923 204039
Web	www.maudio.co.uk

M-Audio France Floor 6, Gresham House, 53 Clarendon Road, Watford WD17 1LA, United Kingdom	
Renseignements Commerciaux	
tel :	0 810 001 105
e-mail :	info@m-audio.fr
Assistance Technique	
PC :	0 0820 000 731
MAC :	0 0820 391 191
Assistance Technique	
e-mail :	support@m-audio.fr mac@m-audio.fr
fax :	+33 (0)01 72 72 90 52
Site Web	www.m-audio.fr

M-Audio Germany Kuhallmand 34, D-74613 Ohringen, Germany	
Technical Support	
e-mail:	support@m-audio.de
tel:	+49 (0)7941 - 9870030
fax:	+49 (0)7941 98 70070
Sales	
e-mail:	info@m-audio.de
tel:	+49 (0)7941 98 7000
fax:	+49 (0)7941 98 70070
Web	www.m-audio.de

M-Audio Canada 1400 St-Jean Baptiste Ave. #150, Quebec City, Quebec G2E 5B7, Canada	
Technical Support	
email:	techcanada@m-audio.com
phone:	(418) 872-0444
fax:	(418) 872-0034
Sales	
e-mail:	infocanada@m-audio.com
phone:	(866) 872-0444
fax:	(418) 872-0034
Web	www.m-audio.ca

M-Audio Japan アビッドテクノロジー株式会社 エムオーディオ事業部 〒460-0002 愛知県名古屋市中区丸の内 2-18-10 Avid Technology K.K. 2-18-10 Marunouchi, Naka-Ku, Nagoya, Japan 460-0002	
カスタマーサポート (Technical Support)	
e-mail :	win-support@m-audio.jp
e-mail(Macintosh 環境専用) :	mac-support@m-audio.jp
tel :	052-218-0859 (10:00~12:00/13:00~17:00)
セールスに関するお問い合わせ (Sales)	
e-mail:	info@m-audio.jp
tel:	052-218-3375
fax:	052-218-0875
Web	www.m-audio.jp