

M-AUDIO

Pro Tools Vocal Studio

User Guide

Introduction

Pro Tools® Vocal Studio has what you need for a professional-quality vocal recording setup. M-Audio Producer USB™ is a professional quality microphone designed for a wide variety of uses, such as music production, voice-overs, and podcasting. Featuring a built-in pro recording soundcard, Producer USB integrates easily with your computer via a standard USB connection. Completing the package, the included Pro Tools® M-Powered™ Essential software is your introduction to the world-standard platform in music production software.

No matter if you are an established professional who wants to take Pro Tools on the road, or if this is your first recording system, we recommend you spend a few minutes reviewing this Quick Start Guide to ensure proper setup.

Pro Tools Vocal Studio Features

- ▶ High-quality, 16mm cardioid capsule USB microphone
 - ▶ Low latency performance using M-Audio drivers
 - ▶ USB bus-powered
 - ▶ Onboard direct monitoring through the integrated 1/8" headphones/line output jack
 - ▶ Onboard blue power LED behind mesh windscreen
-

What's in the Box?

Your Producer USB box contains the following items:

- ▶ M-Audio Producer USB Microphone
- ▶ Desktop mic stand and microphone mount
- ▶ Vinyl zipper case
- ▶ Printed User Guide
- ▶ Pro Tools M-Powered Essential DVD
- ▶ Pro Tools M-Powered Essential Quick Setup
- ▶ USB cable

If any of these items are missing please notify the retailer where you purchased the product.

About this Guide

This Quick Start Guide covers setup of the M-Audio Producer USB microphone for Mac and Windows computers.

The Producer USB microphone contained in this bundle can be used with a variety of third-party music production software. Consult your software's documentation for more information.

Installing Producer USB

To use M-Audio Producer USB with Pro Tools M-Powered Essential software, follow the steps in the printed Pro Tools M-Powered Essential Quick Setup instructions. These instructions include the basic steps for installing drivers for M-Audio Producer USB. Detailed information about installing M-Audio Producer USB drivers is also provided in the next section.

To use M-Audio Producer USB with 3rd-party music recording software, you still need to install the Producer USB drivers. See the following installation steps.

For best results, Producer USB drivers and hardware should be installed first, and your recording software second (unless recording software already exists on the computer).

Installation Instructions for Windows XP and Vista

PLEASE NOTE: Make sure Producer USB is not connected to your computer when beginning the installation. The following instructions will indicate when you should connect the interface to your computer.

1. Install the Producer USB drivers by doing one of the following:

- Download the latest Producer USB drivers from the Support > Drivers page at www.m-audio.com. This is highly recommended as it provides you with the newest drivers available. Once you have saved the installer to your computer, double-click the file to start the installation process.

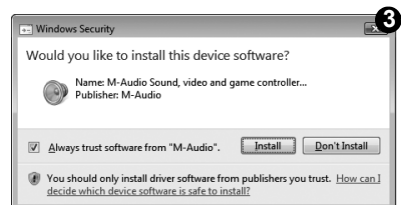
- Or -

- If you do not have Internet access and are installing drivers from the included disc, the computer will automatically display the interactive install screen **1** when the disc is inserted. If your computer fails to launch this application, you can manually start it by clicking on Start > My Computer* > Pro Tools M-Powered Essential DVD > setup.exe. Next, click "Install Producer USB Driver."



**If you are using Windows Vista, "My Computer" will be labeled "Computer" in this step.*

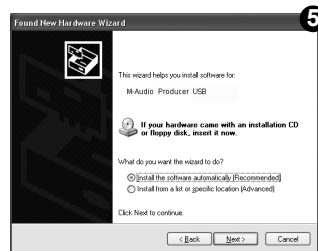
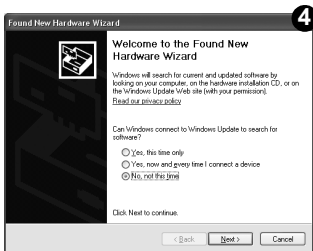
2. Follow the driver installer's on-screen instructions. At various points in this installation process, you may be notified that the driver being installed has not passed Windows Logo Testing, or asked whether the program you wish to run is a trusted application. Click "Continue Anyway" **2** (Windows XP) or "Install" **3** (Windows Vista) to proceed with the installation.



3. Once the installer has completed, click "Finish."
4. Connect Producer USB to an available USB port on your computer. The installation should automatically complete.

Note: Windows XP users may encounter additional messages. If so, proceed with steps 5-7.

5. Windows XP will identify the interface and ask if you want to search the Internet for a driver. Select "No, not this time" and press "Next." **4**
6. Windows XP will display a Found New Hardware Wizard dialog asking what you want the wizard to do. Choose "Install the software automatically" and click "Next." **5**



7. Once the Wizard has completed, click "Finish." If you are presented with another Found New Hardware Wizard dialog, repeat steps 5-7.

Installation Instructions for Mac OS X

PLEASE NOTE: Make sure Producer USB is not connected to your computer when beginning the installation. The following instructions will indicate when you should connect the interface to your computer.

1. Install the Producer USB drivers by doing one of the following:
 - If you have Internet access, download the latest Producer USB drivers from the Support > Drivers page at www.m-audio.com. This is highly recommended as it provides you with the newest drivers available. The downloaded file should automatically mount and display its contents. If this file does not automatically mount after it has finished downloading, click on the file from the downloads stack in the dock to display its contents. Next, double-click the installer application.
- or -
- If you do not have Internet access and are installing drivers from the Pro Tools M-Powered Essential DVD, a DVD-ROM icon will appear on your desktop once the disc is inserted into your computer. Double-click this icon to view the contents of the disc. In the Drivers folder, double-click the driver installer (.dmg) file for ProducerUSB_OSX.

2. Follow the driver installer's on-screen instructions. During installation, Mac OS X will ask you to enter your user name and password. Enter this information and click OK to confirm. If you have not configured a password for your computer, leave the password field blank and click OK. If you are not the computer's owner, ask the owner or your Administrator for this information.



3. When the installer has completed, click "Restart." Your computer will reboot automatically.
4. After your computer has finished starting up, connect Producer USB to an available USB port on your computer. Producer USB is now installed and ready to be used.

NOTE: In order to hear audio from Producer USB, you **MUST** connect your headphones, powered speakers, mixer or stereo system to the 1/8-inch headphone jack on the front of Producer USB. Sound will **NOT** come out of your laptop or computer speakers while Producer USB is connected to your computer.

The Software Control Panel

The Producer USB Software Control Panel allows you to adjust settings such as input gain, monitor mix levels, and output volume. The Control Panel is divided into separate pages, each accessible by clicking on the corresponding tab. To open the Producer USB Software Control Panel:

Windows XP/Vista users: A small M-Audio logo  will be placed in the system tray, generally located at the bottom of your Windows desktop. Double-click this icon to open the Control Panel.

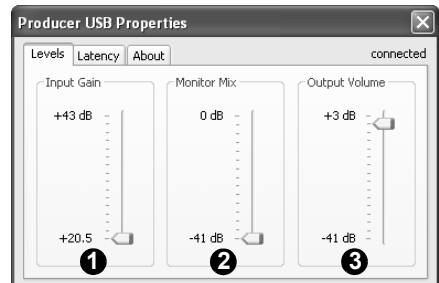
Mac OS X users: The Producer USB Control Panel can be found in System Preferences, under "Other."

Note: The Software Control Panel is available only after the Producer USB driver software has been installed. It will not appear if Producer USB is being used as a *class compliant* device (this means using the device with the drivers already built into the computer's operating system). Also note that the Producer USB driver software must be installed and the device connected in order for Pro Tools M-Powered Essential to function.

Levels Tab (All Systems)

1. Input Gain Control - This slider controls the level coming from the microphone. If the input meters on your audio software are showing red, lower the input gain level.

2. Monitor Mix Control - This slider controls the level of signal from the microphone that is sent directly to the mic's integrated 1/8-inch monitor output. This signal is blended with the output signal from your



audio software. This monitoring method (called "Hardware Monitoring" or "Direct Monitoring") allows you to listen to your input signal before any software audio processing takes place, thereby preventing undesirable delays (latency) common when monitoring your input signal through your software. Adjust this slider until you have achieved the desired balance between microphone signal and playback levels.

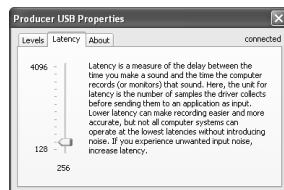
When monitoring your input using the Monitor Mix Control, make sure that your audio software is not outputting signal from the track you are currently recording. This would cause "double-monitoring," resulting in an undesired "phasing" or "slap-back" echo. Consult the documentation for your audio application regarding disabling software monitoring.

The Monitor Mix Control has no effect on what is actually recorded in your audio software.

3. Output Volume Control - This slider controls the level of output signal from your audio software.

Latency Tab (Windows XP and Vista)

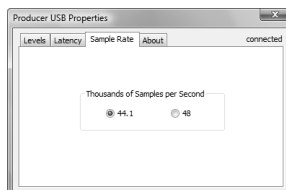
The term "latency" refers to the time it takes for signals from the microphone to pass through your audio software and appear at the output of Producer USB. This latency can result in a delay that is undesirable when overdubbing to existing tracks. The slider lets you select the size of the buffer in samples. Smaller buffer sizes result in lower latency, but may not function well with slower systems, causing clicks, pops and dropouts in the audio playback. The default buffer size is 256 samples. If you are experiencing clicks and pops in your audio, try increasing the buffer size. On Macintosh systems, the buffer size is normally adjusted within your audio recording software.



NOTE: This setting cannot be modified while a recording application is running.

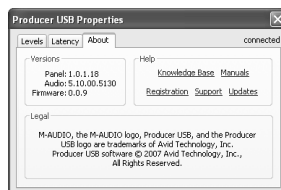
Sample Rate Tab (Windows Vista Only)

This page allows you to choose a sample rate of 44.1kHz or 48kHz. This is provided in order for MME applications in Windows Vista to have access to both of the supported sample rates. ASIO and WDM applications allow you to change the sample rate within the recording software, regardless of the setting on this tab.



About Tab (All Systems)

This page contains information on your hardware and current driver software versions. This information may be helpful should you ever have the occasion to call for technical support. Clicking the links on this page will take you to useful pages on the M-Audio website.



Audio Software Configuration

The included Pro Tools M-Powered Essential software automatically selects and configures M-Audio Producer USB for audio recording. If you are planning to use a 3rd party recording software, you will need to select M-Audio Producer USB as the audio input and output device for the software and its tracks. Please refer to the documentation for your recording software for more information on audio device configuration.

Recording with Producer USB

1. On the Levels tab of the Software Control Panel, turn the Input Gain Control all the way down. (It should be all the way down by default.)
2. In your recording software, select M-Audio Producer USB as the input source for a new track.
3. While speaking, singing, or playing a musical instrument into the Producer USB microphone (at the loudest level you expect to occur during your recording,) slowly turn up the Input Gain slider until the red clip indicator begins to illuminate in your recording software. Then, turn the Input Gain slider down until your recording software's clip indicator no longer illuminates. At this point, you should be ready to record with the optimum gain setting.

Note: *Placing a pop filter (available from most music equipment retailers) between the microphone and a vocalist can improve recording quality by reducing the impact of sibilance and plosives during a vocal performance.*

Additional Information and Support

Documentation for the included Pro Tools M-Powered Essential software can be accessed via the application's Help menu. Additional installation and setup instructions can also be found in the included Pro Tools M-Powered Essential Quick Setup.

Before Updating Your Mac or Windows System:

Please check the M-Audio driver download page at www.m-audio.com/drivers for the availability of an updated driver before you decide to install Microsoft or Apple operating system updates.

Before new M-Audio device drivers are released, they are tested for use with operating system versions that are available at that time. When updates for an operating system are released, all M-Audio device drivers have to be re-tested and possibly updated to ensure proper operation.

M-Audio recommends refraining from installing operating system updates until a driver has been posted to the M-Audio website for that specific operating system. The M-Audio website (www.m-audio.com) contains the latest drivers and program updates as well as useful links to news stories, FAQs, and technical support. We recommend checking this site regularly to ensure you have the latest drivers and most up-to-date information about your M-Audio products.

Warranty

Warranty Terms

M-Audio warrants products to be free from defects in materials and workmanship, under normal use and provided that the product is owned by the original, registered user. Visit www.m-audio.com/warranty for terms and limitations applying to your specific product.

Warranty Registration

Immediately registering your new M-Audio product entitles you to full warranty coverage and helps M-Audio develop and manufacture the finest quality products available. Register online at www.m-audio.com/register to receive FREE product updates and for the chance to win M-Audio giveaways.

Documentation Feedback

At M-Audio, we are always looking for ways to improve our documentation. If you have comments, corrections, or suggestions regarding our documentation, email us at publications@m-audio.com.



WARNING: This product contains chemicals, including lead, known to the State of California to cause cancer, and birth defects or other reproductive harm. **Wash hands after handling.**

© 2009 Avid Technology, Inc. All rights reserved. Product features, specifications, system requirements and availability are subject to change without notice. Avid, Pro Tools, M-Powered, M-Audio and Producer USB are either trademarks or registered trademarks of Avid Technology, Inc. All other trademarks contained herein are the property of their respective owners.

M-AUDIO
A part of *Avid*

www.m-audio.com

M-AUDIO

5795 Martin Road
Irwindale, CA 91706, USA

TECHNICAL SUPPORT

Visit the M-Audio Online Support Center
at www.m-audio.com/support

PRODUCT INFORMATION

For company and product information
visit us on the web at www.m-audio.com