

Music Teacher

Learn to play keyboard with your PC

Music Teacher Help Manual

License agreement:

Information in this document is subject to change without notice and does not represent a commitment on the part of Evolution Electronics Ltd.

The software described in this document is furnished under a single-user license agreement. It may only be copied for the purpose of a backup under the terms of the single-user agreement. Any other copying is against the law. No part of this document may be reproduced or transmitted in any form or by any means, electronic or mechanical, including photocopying and recording, for any purpose without the express written permission of Evolution Electronics Ltd

Credits and copyright

Copyright © 1998 by Evolution Electronics Ltd. All rights reserved.

Music Teacher is an Evolution Electronics production.

Music Teacher programmed by Stephen J. Mellin.

Manual written by Rhun Roberts

Readme file

Please check the program directory for a file called README.WRI. This will list any changes made to the program after the manual was printed.

Updating your Software

To update your software to the latest version visit our web site on <http://www.evolution.co.uk>. Here you will find patches exclusively for Evolution own brand products. Simply download the free updates, run the patch.exe files and quickly update your software.

Technical support

Evolution Electronics offers free technical support for registered Music Teacher users. If you have a problem, before contacting Technical Support please read the relevant section of the manual and the on-line help section of the software.

If you still need technical assistance, please have the following information to hand:

OPERATING SYSTEM :e.g. Win 3.11

HARDWARE PLATFORM: e.g. IBM PC

CPU: e.g. 486

CPU SPEED: e.g. 33 MHz

RAM: e.g. 8MB

SOUNDCARD:

Technical Support can be contacted:

Between 0900 and 1700 UK Time

Evolution Electronics Ltd,
8 Church Square,
Leighton Buzzard,

Bedfordshire,
LU7 7AE.
United Kingdom

Tel: (01525) 372621
Fax: (01525) 383228

Support E-Mail : support@evolution.co.uk
Sales E-Mail : sales@evolution.co.uk
<http://www.evolution.co.uk>

International :

Tel: +44 1525 372621
Fax: +44 1525 383228

Introduction

Welcome to the digital musical world of Evolution Music Teacher brought to you by leading UK music software developer, Evolution Electronics. This manual is an addendum to the on-line help which is available within the software.

Installing Music Teacher

If you really hate reading manuals then by all means follow your instincts and experiment. If you have installed other PC programs, you'll find Music Teacher's installation very straight forward. Otherwise, check out the "Installing Music Teacher" section later on in this chapter.

What is Music Teacher?



Music Teacher is a program designed to improve your musical skills and keyboard technique by use of simple tests and games. **Music Teacher** lets you tap out the rhythm of a song - and automatically plays the correct notes for you. It will even tell you if you're playing ahead of, or after the beat. The program will even wait for you if you're playing well behind until you catch up with the right notes!



Music Teacher lets you guess the notes you see on the screen - and tells you if you're playing too high or too low. **Music Teacher** will assess every note you play during a song for left **and** right hands - and gives you a percentage mark at the end of the test.

Music Teacher lets you load in MIDI file to help you learn how to play it.



Music Teacher has a fun "Game" screen which is great for people of all ages. The game consists of 12 1-bar tests and has 4 teachers to examine your playing. Mr Easy might give you full marks for your efforts, but watch out for the MIDI GURU - who expects you to play every note "spot-on" before you'll get any kind of mark.

Music Teacher has a **Backing** mode which plays the backing track of a song as you jam along playing the melody. The **Recital** mode is used as a simple MIDI file player - no need to worry about playing the right notes here - all tracks will be played for you. If you like - you can flick through each track to see what's being played by, say, the main piano, bass line, guitar riff etc..

Music Teacher has a "loop" feature that allows you to practice difficult sections over and over until you get them right. You can even slow down the tempo to practice getting those awkward semi-quaver notes!!

Music Teacher has high quality graphics with easy to understand buttons. Fancy a metronome click to help you get the right rhythm? - no worries - just click on the picture of the metronome!



Music Teacher is an intuitive teaching package which will improve your pitch and rhythm recognition in no time at all. A few days with Music Teacher and you'll notice an improvement with your playing. A few weeks with Music Teacher and you'll be playing your favourite tunes to your friends and family's disbelief!

What you need

To run Music Teacher you require the following:

*A 486 IBM PC or compatible running at a minimum speed of 25 MHz, preferably faster.

* Windows 3.1x or Windows 95.

* 4Mb of RAM with Windows 3.1, 8Mb of RAM with Windows 95.

* 3Mb of hard disk space for the program.

* A VGA resolution monitor or better. The screen resolution is designed at 640 x 480 using 256 colours, so make sure your graphics resolution is set to at least 256 colours.

* A MIDI interface or PC sound card with a MIDI interface. You'll also need an electronic music keyboard with a MIDI OUT socket to connect to your soundcard for the inputting of notes into the program.

INSTALLING MUSIC TEACHER

This section explains how to install Music Teacher onto your hard disk. The process is virtually automatic - all you have to do is follow a few on-screen prompts.

Windows 95

Put the program disk in a disk drive and click on the start button on the task bar. Click on "Run". Type in a:\setup in the "Open" section. If you don't like typing - you can click on "Browse" - and locate the setup.exe file on your floppy drive.

Windows 3.x

Put the program disk in your floppy drive and open the file manager. Select Run... from the File Menu and in the Command Line enter:

X:\SETUP

where X is the letter of the floppy disk drive. In most cases this will be A - so you would enter a:\setup. Then press Return or click on OK.

If you really don't like typing you can open the drive by double clicking on the drive icon in the file manager and then double click on the **setup.exe** file.

The Music Teacher installation dialogue box will appear asking which directory you want to install the program to. The default will be C drive followed by "Teacher" (in Windows 3.x) or C:\ Program Files\ Teacher in Windows 95. If you want to change the drive or directory path to install the program - you can do that here. Now click on the OK button and the routine will create a directory called "Teacher" on your hard disk and put the files in it. For a smooth installation just click on OK for all options.

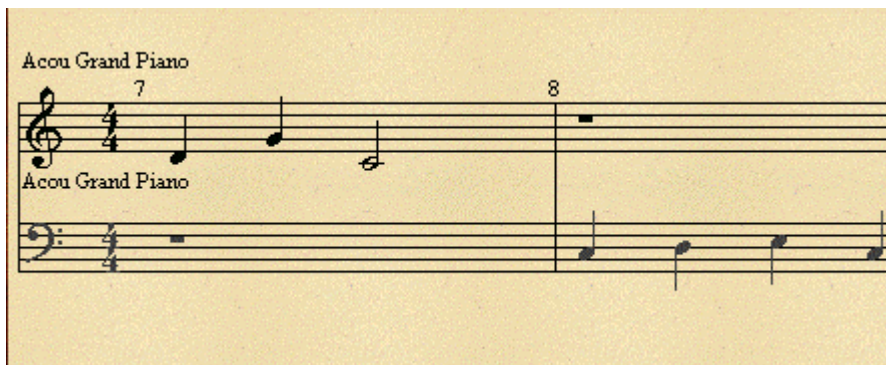
To **uninstall** Music Teacher, follow the standard Windows 95 uninstall procedure and point to the Music Teacher program when prompted. For Win3.x users, an uninstall program will be installed in the Music Teacher Program directory.

Quick Start

The best way to learn about a new program is to sit down and start using it - so let's go and do just that!

Just follow the simple step-by-step guide below and you'll become a Music Teacher "Power User" in no time at all!

When you first run the program - a file called INITIAL.MID will be loaded automatically. This is the song we'll be using to get to know all the main teaching tools of Music Teacher.



You should see 2 bars of music on the screen with the play position (the triangle) directly above the rest in the first bar. You should be in **Recital** mode (as indicated by the button on the right hand side of the main screen.)



Now press the **play** button.

This will start the playback of the song. You'll notice some accompaniment sounds playing along with the melody. As the song is played - each note will turn red in the score display as they are played. This will help you get the feel of the rhythm of the song.

If the notes appear in red - but you cannot hear any sounds coming from your speakers - please take a look in the Trouble shooting section before continuing with this quick start tutorial.



At the end of the song - press the go to start button This will take the play position back to the start of the song. Press play again to listen to the song once more.

Now that you know what the song sounds like-we'll listen to the melody on its own.



Press the **Listen** button. Notice that the lower stave becomes greyed out, indicating that we are going to learn the top stave only. Only the music in the score display area will now play. This includes the greyed out music on the lower stave.

Press play. Again, you'll see the notes on the top stave appear red as they are played. The keys on the screen keyboard will also turn red when they are played.

Repeat the process of playing and rewinding the song until you're happy with how the melody sounds.



When you're happy - rewind the song to the start and press the **Teach** button. You can now decide which of the three teaching modes to work with. You can choose to learn either the rhythm, the notes or both. First of all we will choose to learn just the rhythm of the piece.



Click on the **rhythm** "pedal".

The object of the rhythm test is to tap out the rhythm of the music displayed in the score area. You can use absolutely any key on your MIDI keyboard to tap out the rhythm - you don't have to play the same pitch of the notes you see on the screen.

After pressing play - the play position triangle will move across the screen from left to right, lighting up each note in turn. All you have to do is tap each note as they turn red.



If you tap too late, you will see a left facing arrow above the note.



If you tap too early, you'll see a right facing arrow above the note.

If you tap the note on the correct beat - the note will turn from red to black and you'll then go on to tap the next notes.

Let's try it!

Press play.

Did you get 100%?? Maybe not first time. Try again. Rewind the song to the start then press play again.

If you don't play all the notes in the first bar - the play position will stop and wait for a MIDI input. Only then will it carry on playing.

Repeat the test many times until you get a high percentage mark at the end of the test.



Once you're happy with the rhythm of the song - rewind the song to the start then press the **Notes** pedal.

This time - you don't have to play the correct rhythm of the song - all you do is guess the notes you see on the screen. You can do this in 2 ways:-

1. The Easy way (for cheats) - look at the screen keyboard for the note to play.
2. The Sensible way - play notes on the MIDI keyboard which you think match up with those in the score.

Press the play button.

You'll now see the first note of the song turn red. All you have to do is play notes on your keyboard that matches that on the screen. There is no metronome click this time - so there is no rush to play each note - take your time !



If you play a note which is too high, you'll see a downward facing arrow.



If you play a note which is too low, you'll see an upward facing arrow.



To help you guess the correct note - each note you play from your keyboard will be displayed on the left hand side of the score display as a blue note. If the note you're learning is still red - it means you haven't played the correct note. Try again until the next note turns red. Again - look at the indicators above the notes to see if you're playing too high or too low.

You can stop the test at any point during the song - but if you do reach the end of the song - the test will stop automatically and will give you a percentage mark.

Repeat the test until you get a higher mark. If you repeat it enough times - you will surely get 100%. Each time you press play -the test will appear progressively easier as you gradually recognise all the notes in the song.



Once you've mastered the notes test - press the **Notes and Rhythm** button

The notes and rhythm test teaches you to play both the notes plus the rhythm of a song. The difference between the rhythm test and the "notes and rhythm" test is that the latter expects you to play all correct notes before the play position continues.

Press the play button.



After the 4 beat introductory bar - play the notes you see on the screen. If the test is too fast for you - press the Tempo button (marked with a % sign) - and choose from one of the settings 25, 50 or 75. These values will play back the music at a quarter, half and three quarter the original tempo.

Once you've mastered playing the notes and rhythm of the song at a lower tempo - try increasing the tempo to the original setting by pressing the tempo button once again. You'll be playing the song and getting 100% in no time at all ! (Once you've got the hang of the song at full speed and you feel like a challenge, you could try the test at 125, 150, 175 or 200% speed.)

Well done ! - you've now seen most of the major music teaching tools of Music Teacher. You can now go on to load another song to learn - or try learning both tracks of the default.mid song. Check out the relevant sections of the help text for more information on these features.

Installed in the same directory as Music Teacher you will find 20 excellent Alfred MIDI files of well known traditional songs. These files are ideal for testing purposes and each one has a backing track. Listen to them in Recital mode first of all to listen to the whole arrangements.

The Four Main Music Teacher Modes

Listen Mode



When the Music Teacher is in Listen mode - it plays the current track you are learning regardless of any notes you might play from an external keyboard. You will not be penalized for playing notes too early or too late - or indeed if you play any wrong notes. Listen mode will not give you a percentage mark for your playing at the end of a file.



To select a track to listen to - click on one of the track selectors on the left hand side of the main screen. You can select up to 2 tracks to listen to at any one time by clicking on one of the triangles with your left or right mouse buttons. If you find you can't select a track - it's because there are no musical notes on that track to learn. The same is true for channel 10 (drums). You can change which tracks appear in the score display whilst a song is playing - making it easy to see which tracks/instruments are playing.

As the play position scrolls across the screen - each note will turn red as it's played.

After listening to a track for a while - you'll probably want to go ahead and be taught how to play that track. To do this - press on the "Teach" button.

Teach Mode



This is the main teaching button and the button you should have selected when you want to be taught a song. Only in this mode will you see early/late/high/low indicators when your notes are not of the correct pitch or rhythm.

Once you're in Teach mode - you can choose any of three tests to help you learn a track. You can be taught the **notes** of a track in the notes test, the **rhythm** of the track (rhythm test) or you can be taught both (**rhythm and notes** test).

Start off by clicking the "Notes test" button. You will then have to correctly strike the correct keys on your MIDI keyboard to match those appearing in the score display. You can do this in your own time - as there is no metronome click to accompany you.

Once you've mastered the notes test - you can move on to start learning the rhythm of the track by clicking on the "Rhythm test" button. This time you will have to correctly tap out the rhythm of the notes you see on the screen. You can play any keys you wish on your MIDI keyboard to tap out the rhythm without being penalized! If you tap the keys on the correct beat - you should hear the melody being played by the program.

When you think you've got the hang of the rhythm of the song - you should go on to practice playing the "Notes and Rhythm" together. This is trickiest test of all (especially when learning 2 tracks!).



Teach mode will play back only the currently selected tracks (chosen from the track selector on the left hand side of the screen). In this example - both tracks 1 and 2 will be taught.

When in teach mode - the only tracks you'll hear will be the tracks visible in the score display along with the metronome (if enabled).

To practice any track along with a full orchestration - you must enter Backing mode.

When you've mastered the rhythm and the notes of a track - try playing it as a solo in Backing mode. This will add the backing band to play along with you.

Backing Mode



Pressing the "**Backing**" button will play all backing tracks for playback (if any are present).

This allows you to jam along with the music and try to follow the score display. If you can't follow the music in time - don't worry - you won't be penalized for it. The Backing mode does not assess your timing or note accuracy and does not give you a score at the end of the file. When in Backing mode - the tracks currently displayed on the score display will not be played back. This is so you can practice playing these parts as a solo!

If you find you cannot follow the music at all - go back to Teach mode - and learn any track over and over again so that you can comfortably play along with the band.

If no additional accompaniment tracks are heard - it means the MIDI file does not contain musical data on the tracks other than the ones you are viewing.

As the play position scrolls across the screen - each note will turn red as it's played.

If you would rather listen to the complete MIDI file without having to play any parts - click on the "Recital" button.

Recital Mode



Choose this mode when you simply want to listen to your MIDI file and not learn any of the tracks. This will play back your song regardless of which tracks you have enabled in the track selector on the left side of the screen.

The song will start immediately when the Play button is pressed regardless of which test mode you are in - and does not wait for a MIDI input.

Use Recital mode as a simple MIDI file player - with full control over start/stop - fast forward/rewind plus the added bonus of being able to see the music on the score.

As the play position scrolls across the screen - each note will turn red as it's played.

Music Tests

3 tests operate when in **Teach mode**.



Rhythm-Test

Notes-Test

Notes and Rhythm test



Rhythm Test

Choosing Tracks

Objective

Learning the rhythm of two tracks.

Results of the test



The rhythm test allows you to tap out the rhythm of a song and judges you on how accurate your tapping is. As the play indicator moves across the screen - you can play any key on your MIDI keyboard to tap out the rhythm. This means you can ignore the pitch of the notes you see - all you have to do is strike the keys on the correct beat. If you tap the keyboard on the correct beats - you will hear the correct melody being played.

Choosing Tracks

Before you start the test you must first select which tracks you are about to learn. Do this by clicking on the track selector on the left hand side of the main window. After doing this you can go on to start the test. You can click on up to 2 tracks at a time. If a track is not "clickable"- it means there is no musical data on that track to be taught.

To start the test press the **play** button. If you need a one or two bar introduction to the test you must click on the "Bars-In" button.

Objective

The object of the Rhythm test is to strike keys on your MIDI keyboard on the same beat as the notes displayed on the screen. The first note to be played will turn red. When a key has been pressed on your keyboard - the next note along will turn red, and so on.

Each note will turn red when it's time to play that note. The play position triangle will scroll across the top of the score display and will indicate which beat we are on. As the play position passes immediately above a note - the note will turn red. This is the time to tap the key.

If a song starts with a few bars rest - the song will play these bars - and carry on until it gets to the first red note.

If you do not press a key for one complete bar - the music will stop and wait for a MIDI input (or a mouse

click on the screen keyboard). When you do eventually catch up with the notes you have missed - the song will carry on playing. This will also happen if the play position reaches the end of a bar and you haven't played all the notes in that bar.

Learning the rhythm of two tracks.

If you've selected two tracks to be taught - you must make use of the **split point** in order to tap out the rhythm of both hands separately. The split point will be indicated on the screen keyboard by a yellow triangular indicator. Any note to the right of the split point may be used to tap out the rhythm of the right hand. Any note to the left of the split point may be used to tap out the rhythm of the left hand.

Please keep an eye on the split point during the test as it moves about according to the notes in the tracks. In order to tap the rhythm of both tracks - you must make sure you always tap 2 keys on either side of the split point.

Handy Hint


In case the split point moves around during a test - choose keys on either end of your keyboard to tap out the rhythm. This way you can be sure to play the left and right hands separately.


If multiple notes are displayed on the same beat (in a chord for example) - you need only play one key on the keyboard.

If you don't play any notes in any one bar - the music will stop and wait for you to catch up with the notes in the screen. As soon as you reach the first note of the new bar - the music will carry on automatically.

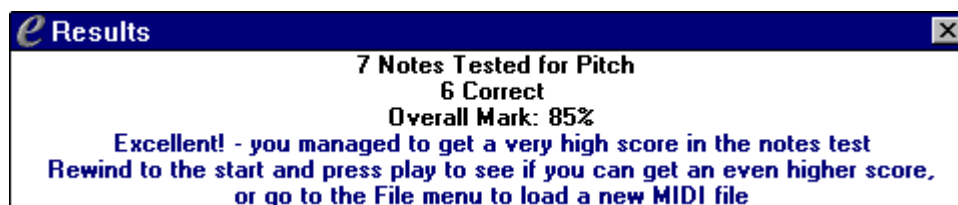
Please note:-

You must make sure that the rhythm of both tracks are played before the play position moves on to the next beat. If the notes of only one track is played - the play position will wait until a note on the other track is played before progressing.

 When a note has been played too late - a light purple left arrow will appear in a box above the offending note indicating the note should have been played earlier.

 In the same manner, if a note is played too early (ahead of the beat) - a right arrow will appear in a box above the offending note/notes indicating the note should be played later on.

Results of the test



At the end of a test - a window will appear indicating how many notes were played correctly or if they were late or early. An overall mark will be given as a percentage after taking into account all the notes played.

If you are learning the rhythm of 2 tracks - the results window will display a score for both left and right hands. This way you can see if you need to practice some more with your left or right hand.



Notes Test



The note test allows you to play the notes in a song and judges you on how accurate your pitch recognition is. As each note changes from black to red - you can play any key on your MIDI keyboard to guess the notes. Indicators will be displayed for any wrong notes you play.

Selecting Tracks

Before you start the test you must first select which tracks you are about to learn. Do this by clicking on the track selector on the left hand side of the main window. After doing this you can go on to start the test. You can select up to 2 tracks to be taught.

To start the test press the **play** button. The count-in option is ignored when in notes test mode - as there is no tempo to abide by.

Objective

The object of the Notes test is to strike keys on your MIDI keyboard which are of the same pitch as the notes displayed on the screen. The first note to be played will turn red. When the correct key has been pressed on your keyboard - the note will turn black and the next note along will turn red. If multiple notes are on the same beat (a chord for example) - you must play all notes in that chord before the next notes turn red. As each note in the chord is played - they will turn from red to black.

The notes will not be recognized until you take your fingers off the keys on your keyboard or until you release the click on your mouse when on the screen keyboard.


If a song starts with a few bars rest - pressing play will scroll through the score until the first note of the test is displayed and will turn it red.

Learning the notes on two tracks.


If you've selected 2 tracks to be taught from the track selector - you must make sure that all notes on both tracks are played before the play position moves on to the next beat. Most of the time - the melody will be played in the right hand which means it will be displayed in the upper staves. If you don't play all notes present on the same beat (in a chord for example) - the play position will not continue to the next beat until all notes have been correctly detected. When a note has been correctly guessed - it will turn from red to black.

Blue Notes

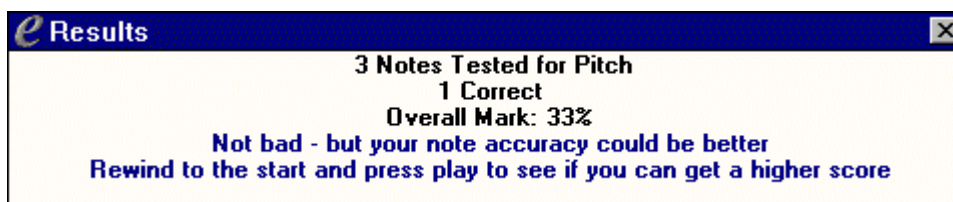
When you play the keys from your MIDI keyboard - you'll see the notes being displayed on the left hand side of the score staves as blue coloured notes. This is a helpful guide for you to see how close to the notes you are. If 2 tracks are selected for teaching - the blue notes will be assigned to both staves with the split point set at middle C. If the left hand track has notes above middle C - the split point may move up the keyboard. Respectively - if the right hand track contains low notes below middle C - the split point will move down the keyboard. This could happen during the playback of a song - so keep an eye on the split point!

 When a note has been played too high - a black "down" arrow will appear in a box above the offending note indicating the pitch was above that of the score display and you need to play a key lower down the

keyboard to guess the correct note.

 In the same manner, if the pitch of the key you play is too low, - a blue "up" arrow will appear in a box above the offending note/notes indicating you should play a note higher up in order to guess the correct note.

Results



At the end of a test - a window will appear indicating how many notes were played correctly or if they were too high or low. An overall mark will be given as a percentage after taking into account all the notes played.

If you're learning the notes of 2 tracks - the results window will display a score for both left and right hands. This way you can see if you need to practice more with your left or right hand.

Crossed parts

Sometimes when you load a MIDI file you'll discover that some notes on the lower staff overlap the notes on the upper staff. This means that notes assigned to the left hand staff would be higher in pitch than notes on the right hand staff. In this situation - the Music Teacher will display a warning saying you can only select one track at a time to be taught. You could then either learn one track at a time - or select another 2 tracks to be taught.

If you don't wish to see the warnings appear on the screen - you can turn them off from the Preferences menu.



Notes and Rhythm Test

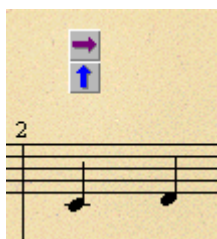
Selecting Tracks

Objective

Learning the notes and rhythm of two tracks

"Blue" Notes

Results



The Notes and Rhythm test judges you on your pitch and rhythm accuracy. As each note changes from black to red - you can play the keys on your MIDI keyboard to guess the notes and rhythm.

Selecting Tracks

Before you start the test you must first select which tracks you are about to learn. Do this by clicking on the track selector on the left hand side of the main window. After doing this you can go on to start the test.

To start the test press the **play** button. . If you need a one or two bar introduction to the test you must click on the Bars-In button.

Objective

The object of the Notes and Rhythm test is to strike keys on your MIDI keyboard of the same pitch as the notes displayed on the screen as well as detecting the correct rhythm for the piece of music in the score display section. The first note to be played will turn red. When the correct key has been pressed on your keyboard - the next note along will turn red, and so on.

If a song starts with a few bars rest - pressing play will start playing the song from bar 1 - you must count the number of empty bars before starting to play. If you do not press a key for one complete bar - the music will stop and wait for a MIDI input (or a mouse click on the screen keyboard). When you do eventually catch up with the notes you have missed - the song will carry on playing.


The song will not continue when all the correct notes have been played.


Learning the notes and rhythm of two tracks


If 2 tracks have been selected to be taught from the track selector column - you must make sure that the rhythm **and** notes of both tracks are correctly played before the play position moves on to the next beat. If you don't play the correct notes in any of the two tracks for a bar - the music will stop and wait for you to catch up with all the "missing" notes. If you play the correct notes - the music will continue as soon as the first note of the new bar is played. The notes you're meant to play will be red until you correctly guess them - at which point they will turn black.


"Blue" Notes

When you play the keys from your MIDI keyboard - you'll see the notes being displayed on the left hand side of the score staves as blue coloured notes. This is a helpful guide for you to see how close to the notes you are. If 2 tracks are selected for teaching - the blue notes will be assigned to both staves with the split point set at bottom C.

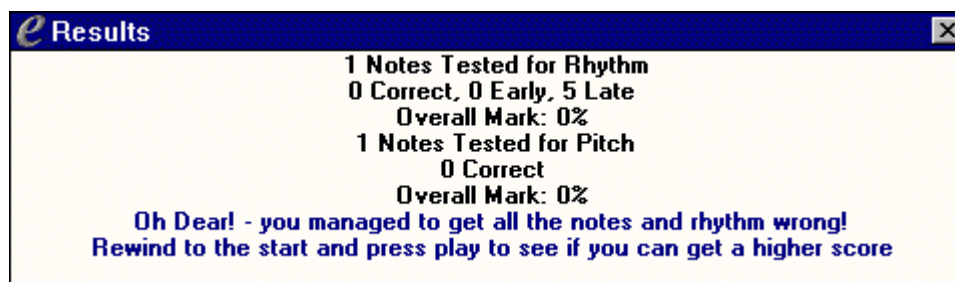
 When a note has been played too high - a blue down arrow will appear in a box above the offending note indicating the correct note is actually lower than the note you played.

 When a note has been played too late - a left arrow will appear in a box above the offending note indicating the note was played after the beat and should be played earlier on.

 In the same manner, if a note is played too early (ahead of the beat) - a right arrow will appear in a box above the offending note/notes indicating you should play the note later on.

 Also, if the pitch of the key you play is too low, - an "up" arrow will appear in a box above the offending note/notes telling you to play a note higher up the keyboard until you get the correct note.

Results



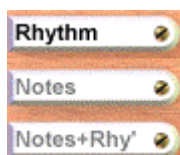
At the end of a test - a window will appear indicating how many notes were played correctly or if they were too high or low as well as an indication of the accuracy of the rhythm played. An overall mark will be given

as a percentage after taking into account all the notes played.

Game Screen

The game screen is a fun way of learning musical phrases. All you have to do is work your way through the level screen from the start all the way to the 12th level. Each game may be easy or challenging depending on the mode you are in and all phrases are played at random so that no 2 games are the same.

Game Modes



Before you start a game you must decide which test you wish to be examined on - Notes, Rhythm or both. The buttons are linked to those in the main Music Teacher Screen - so that if you change the mode in the Game screen - it will also change it in the Music Teacher when you go back to that screen, and vice versa.

The Games screen contains a level board with 12 buttons, four teachers, a score display, play and restart buttons and a Teacher button that takes you back into the Music Teacher screen.

The Teachers

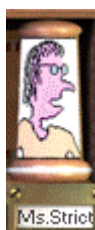
There are four teachers to choose from when in Game mode. To choose a teacher - just click on any of the four buttons. As a teacher is selected - its image will turn black and white (as though drawn on a blackboard!). The teachers get stricter from left to right.

You must decide on your teacher before starting a game - and you cannot change the teacher half way through a game. -Well, you couldn't do that in a classroom either could you??!

When selecting a teacher - bear the following in mind:-



Mr Easy - Uncomplicated score display - the timing accuracy does not have to be spot on in the rhythm tests.



Ms Strict Score display might have accidentals (sharps and flats). Timing accuracy must be better than with Mr Easy.



Mr Hard Score display could be quite complicated - mixing accidentals with dotted rhythms, semi-quavers etc...Timing accuracy must be of a high standard.



Mr Guru. The Score display could display absolutely anything! Semi-quavers, rests, dotted notes, triplets, etc... Your timing must be spot on to pass these tests.

Playing the Game

If you're in **Notes mode** - pressing play will display the first note in the test as a red note. The program will wait for a MIDI input (or a mouse click on the screen keyboard). All you have to do then is play the notes you see on the screen. The correct notes will also appear on the screen keyboard which will help you strike the right notes.

If you play a wrong note - an indicator will appear above the note to tell you if you played above or below the correct note. If any wrong notes are played in a test - you must retry that test.

If in **Rhythm mode**, pressing play will start playback of the one bar phrase. The program will wait for a rhythm to be tapped on the MIDI keyboard. If you need a count-in to the test (which would make it a lot easier), you must have the "Bars-In" button pressed in the Music Teacher screen. You can press any key on your MIDI keyboard to tap out the rhythm - the keys **do not** have to be the same pitch as the notes on the screen. You will be judged on the accuracy of your timing according to which teacher you have selected. If your timing is not accurate - you will have to repeat the test. As soon as the rhythm of the complete bar has been tapped correctly - you will automatically move on to the next square. To start the test again - press the play button.

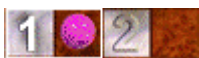
In **Notes & Rhythm** mode - the same rules apply as in the rhythm test. When the play button is pressed - the play position cursor will scroll across the screen awaiting a MIDI input. You will be expected to play the correct pitch of the notes as well as tapping in the correct rhythm. You must get both rhythm and pitch correct before you can move on to the next square.

If you play a wrong note (wrong pitch) - an arrow will be displayed above the offending note or notes.

If the rhythm you play is not correct - arrows will be displayed above the offending notes to show if you played them early or late.

After successfully completing the test on a square - you'll move automatically to the next square. Press the play button to start the new test.

Level Squares



If you get a test correct - a purple marble will jump on to the next square. If you don't play the correct notes or rhythm in a test - the marble will stay on the same square until you get it right. The object of the game is to get the marble all the way from square 1 to the 12th square.

Game Help



Click on this button for instant help on any feature in the game screen.

Play Button



The play button is used to start each game. When the Play button is pressed - the game will be "active".

Restart Button



Click on the Replay button whenever you wish to start a new game. By pressing the Replay button, the program will generate a new game so that all 12 tests will be different. You will start from the first square again - regardless of how far you reached in the game.

Return to Music Teacher Screen



When you've finished in the game screen - click on the Music Teacher button to return to the Main Music Teacher screen to carry on with your tests.

File Menu

OPEN

Whenever you wish to load a new song into the teacher - you would do it from this menu. Teacher will only allow you to load in MIDI files using the .MID extension. Any other file will be ignored.

All you have to do is locate the MIDI files on your system (or from floppy disk or CD-ROM) by clicking in the "Directories" section of the Load file window. All MIDI files in a directory will be displayed on the left hand side of the "Open file" window. To load one in - all you have to do is click on it with your left mouse button - then click on the OK button.

Metronome Preference

When the metronome picture is clicked on the main screen, it lets you hear the metronome click through your MIDI instrument or soundcard. In this preference menu you can determine separately the notes used by the first beat of the bar and by the other beats, plus their velocities.

Channel

This allows you to specify which MIDI channel of your MIDI instrument the metronome will output to. By default it will be set to channel 10 which is the most common channel for playing drum sounds. You could however change this value to anything between 1 and 16 and have any instrument as your metronome.

To change the value of the Channel - click in the box with your left mouse button, delete the current value using the delete button on your QWERTY keyboard - then type in the new value.

Pitch

This allows you to change the pitch (note) of the metronome clicks. If playing drum sounds as your metronome click - you could set it up so that you have a snare drum as the first beat of every bar followed by a rim-shot for example for every beat. This makes it easy to hear the start of each bar. Typical range would be from C1 to C6.

Velocity

The "velocity" option allows you to specify the loudness of each metronome click. If using the same instrument for the Bar clicks and the beat clicks - it's advised to have a higher velocity value for the first beat of the bar to help you recognize the start of each bar.

Metronome



When the metronome is turned on (as in the picture on the left) - a clicking sound is heard played on the drum channel (or your PC speaker) to help you with the beat. A click is played on every beat of the bar. You have full control over which drum instrument actually plays the metronome beats by changing the metronome settings in the Preferences menu.

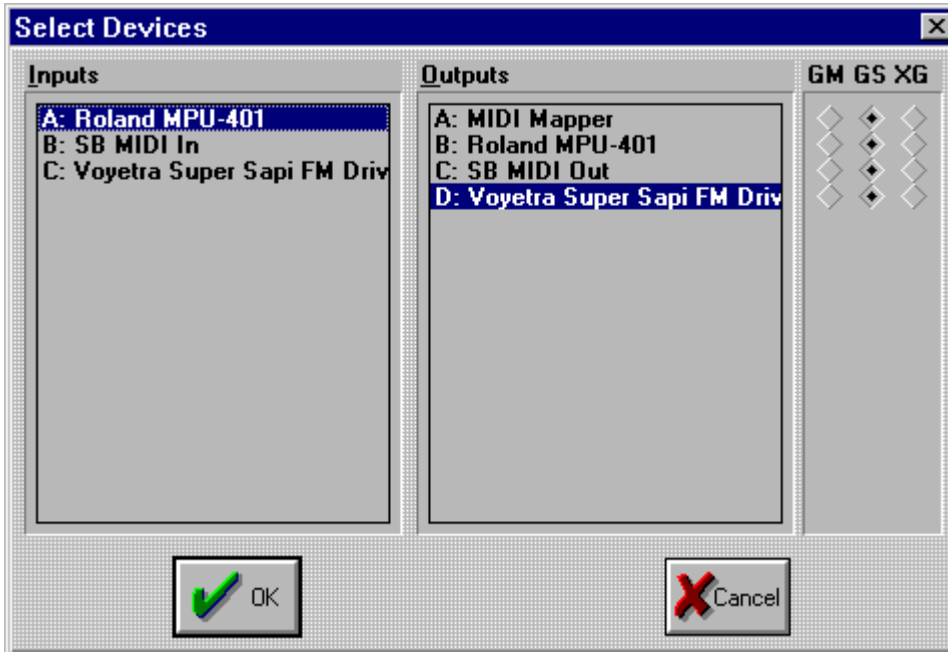
The first time you run the program - the metronome is turned on by default. As your timing gets better you might want to turn off the metronome clicks. To turn off the metronome - just click on the picture of the metronome so that the metal pendulum arm is vertical.

The metronome click is dependant on the tempo of the MIDI file. The higher the tempo value - the faster the

number of clicks.

The metronome click is particularly handy during the count-in to a test to help you get a feel of the tempo before you play your first note.

Devices



If your computer has any MIDI interfaces installed, they will show up in the Devices Dialog. You can choose which output device to use by clicking on its name. A device is in use if it is selected (white text on a black background). Note that Inputs and Outputs are treated separately, so you can, for example, turn off the MIDI Out on the MPU-401 but still use its MIDI In. If you have problems with no MIDI input or output - try various combinations of MIDI IN/Out drivers until you hear sound. Try each output in turn. If you have an XG compatible soundcard- you must press the XG button to the right of the MIDI OUT you are using. The same applies if you have a GM or a GS card. Otherwise you might not hear the correct voices when playing back songs.

MIDI Input

Displays a list of all the MIDI devices detected by your PC. If no devices show up here - you will probably need to reinstall your soundcard. For more information on this - get in touch with the technical support department for your soundcard manufacturer.

The Input devices list allows you to choose a driver that will allow your MIDI keyboard to input notes into Music Teacher.

MIDI Output

Displays a list of all the MIDI output drivers recognized by your PC. These drivers enable the software to play the music to your desired sound module. If no drivers show up in this column - reinstall your soundcard or get in touch with the technical support department for your soundcard manufacturer.

Please note:-

Most of Evolution Electronics' technical support calls are soundcard related - so you can help us to help you by making sure your soundcard has been fully installed with the most up to date drivers (available once

more from your soundcard manufacturers). Once your card and MIDI drivers are recognized by your PC - they will show up in the Devices menu and selecting one of these will allow you to play notes into the Teacher.

Keyboard Short-Cuts

Function	Short Cut Key
Play	Enter
Stop	Space Bar
Rewind	Left Cursor
Fast Forward	Right Cursor
Return to Start	Home Key
Go to End of song	End Key
Left Loop Position	"L" key
Right Loop Position	"R" key
Set Left Loop Marker	"1" key
Set Right Loop Marker	"2" key
File Open	Ctrl + O
Quit	Alt + F4
Metronome On/Off	"M" key
Cycle On/Off	"C" key
Tempo change	"T" key
Bars In (Count-In)	"O" key
Help	"F1" key